

INDUSTRIAL EQUITIES L.L.P.
Development and Investments

TEL 612 332 0139

321 First Avenue North, Minneapolis, Minnesota 55401

FAX 612 332 0241

BURNSVILLE INDUSTRIAL CENTER
12100 Portland Avenue South, Burnsville, MN 55337
COMPLETION THIRD QUARTER 2018



- TOTAL BUILDING SIZE:** 94,534 square feet state-of-the-art office/warehouse
- TOTAL AVAILABLE:** 94,534 total square feet (15,466sf office; 79,068sf warehouse)
- CLEAR HEIGHT:** 32' clear – ESFR Sprinklers
- LOADING:** Seventeen (17) 9' x 10' dock doors with mechanical levelers
One (1) 12' x 14' drive-ins with flammable waste trap
- COLUMN SPACING:** 50' x 53' column spacing or 13,250sf bays
- AMENITIES:**
- * Excellent access to I-35w, Hwy-13, Hwy-77, and I-35e
 - * Corporate campus finishes
 - * State-of-the-art brick and precast construction
 - * Heavy glass treatment
 - * Overhead water throughout
 - * Heavy power
 - * 60 mil 20 year energy efficient roof
 - * Extensive parking and large truck court
 - * Located on bus line

For more information, please call:

John N. Allen

(612) 332-1122 – direct

(612) 845-3200 – cell

INDUSTRIAL EQUITIES L.L.P.
Development and Investments

TEL 612 332 0139

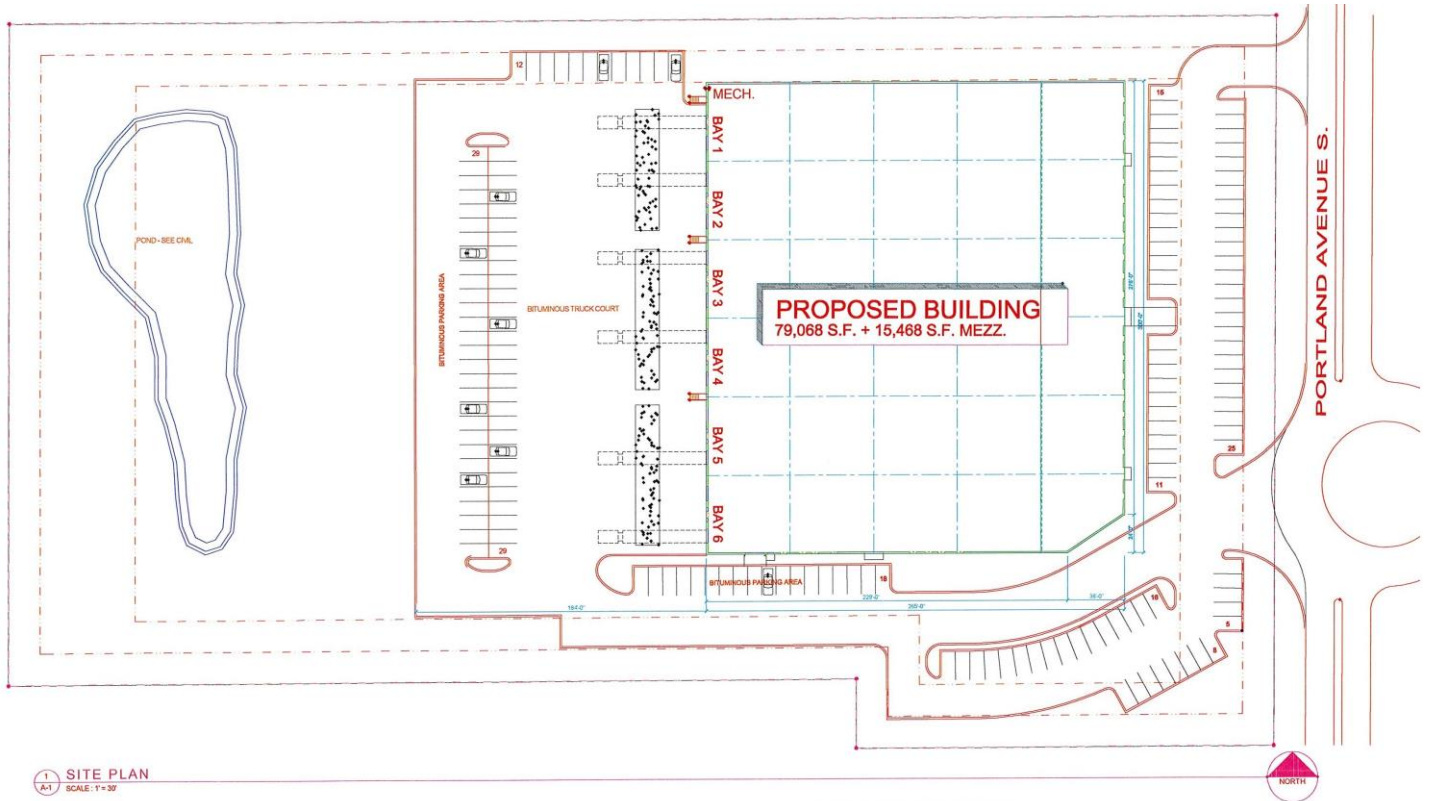
321 First Avenue North, Minneapolis, Minnesota 55401

FAX 612 332 0241

BURNSVILLE INDUSTRIAL CENTER

12100 Portland Avenue South, Burnsville, MN 55337

SITE PLAN



1 SITE PLAN
 A-1 SCALE: 1"=30'

SITE AND PARKING INFORMATION :

SITE AREA :	348,493 S.F. (8 ACRES)	CLEAR HEIGHT WAREHOUSE :	32'-0"
BLDG AREA :	94,536 S.F.	SPRINKLER SYSTEM :	ESFR
SITE COVERAGE :	22.7%	COLUMN SPACING :	50'-0" X 53'-0"
PARKING PROVIDED :	275	DOCKS :	18 @ 9'X10'
TYP. BAY SIZE :	50' X 265'	DRIVE-INS :	1 @ 12'X14'

BUILDING BAY AREAS :

BAY 1 :	12,986 S.F.	BAY 5 :	13,250 S.F.
MECH. :	264 S.F.	BAY 6 :	12,098 S.F.
BAY 2 :	13,250 S.F.	MEZZ. :	15,468 S.F.
BAY 3 :	13,250 S.F.		
BAY 4 :	13,250 S.F.		

For more information, please call:

John N. Allen

(612) 332-1122 – direct

(612) 845-3200 – cell

INDUSTRIAL EQUITIES L.L.P.
Development and Investments

TEL 612 332 0139

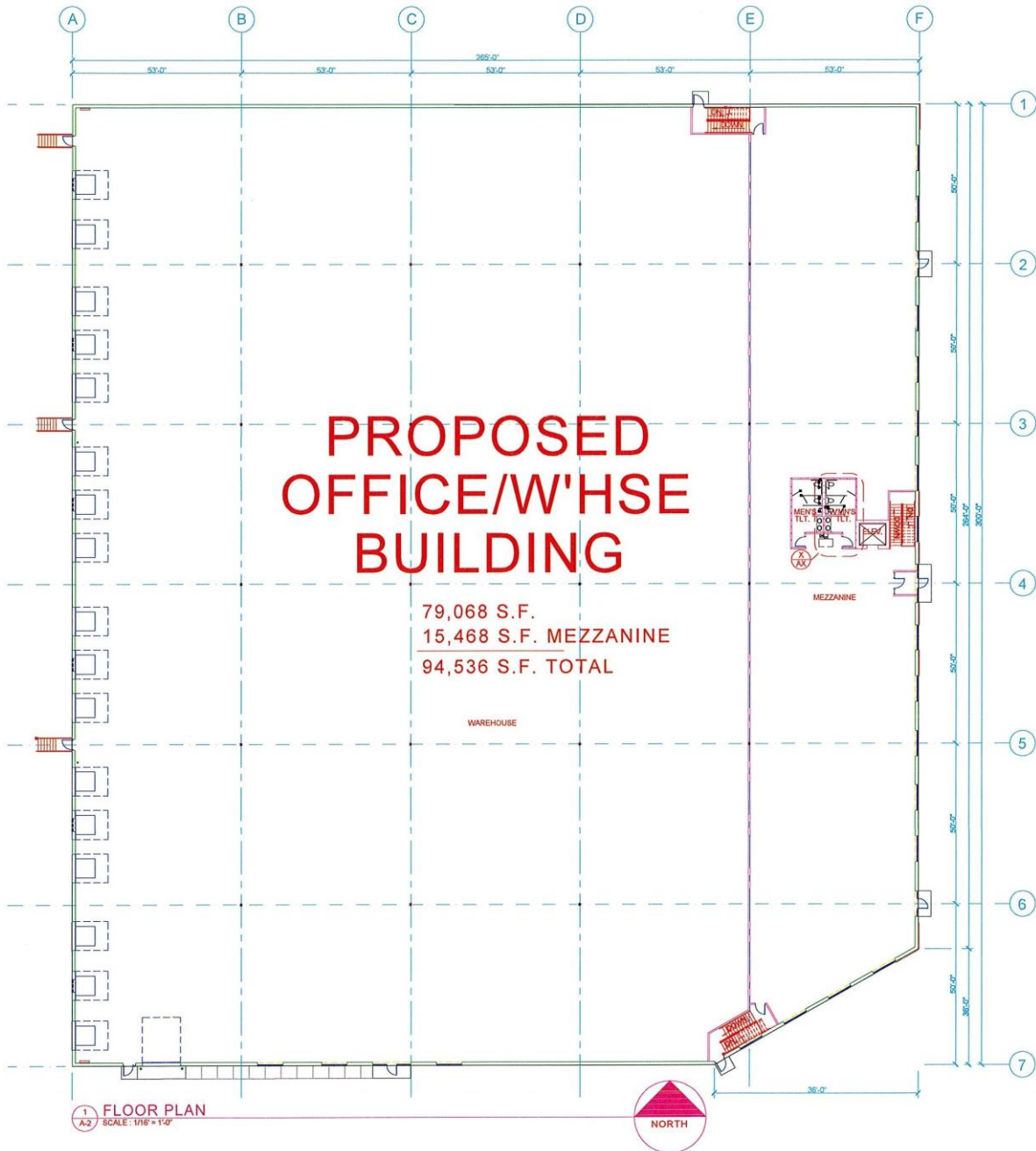
321 First Avenue North, Minneapolis, Minnesota 55401

FAX 612 332 0241

BURNSVILLE INDUSTRIAL CENTER

12100 Portland Avenue South, Burnsville, MN 55337

FLOOR PLAN



For more information, please call:

John N. Allen

(612) 332-1122 – direct

(612) 845-3200 – cell

INDUSTRIAL EQUITIES L.L.P.
Development and Investments

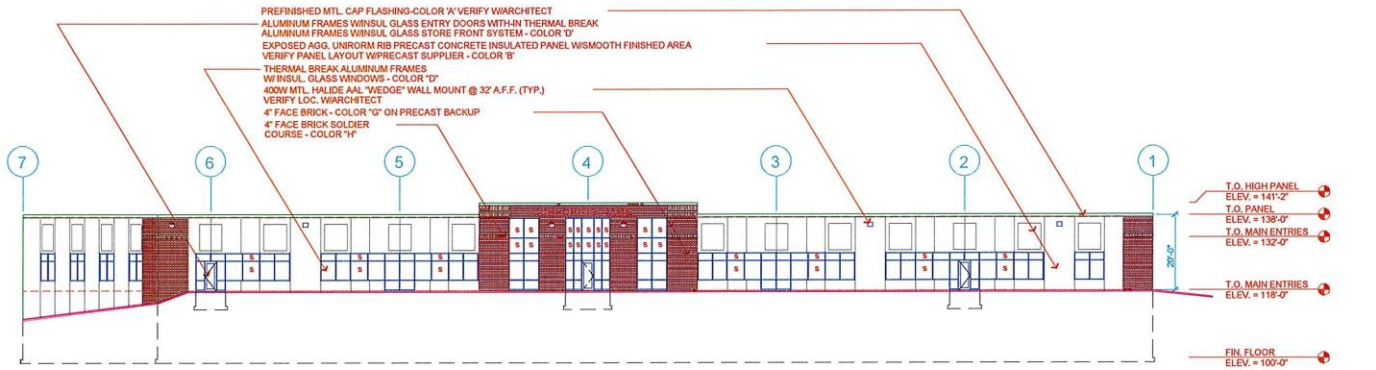
TEL 612 332 0139

321 First Avenue North, Minneapolis, Minnesota 55401

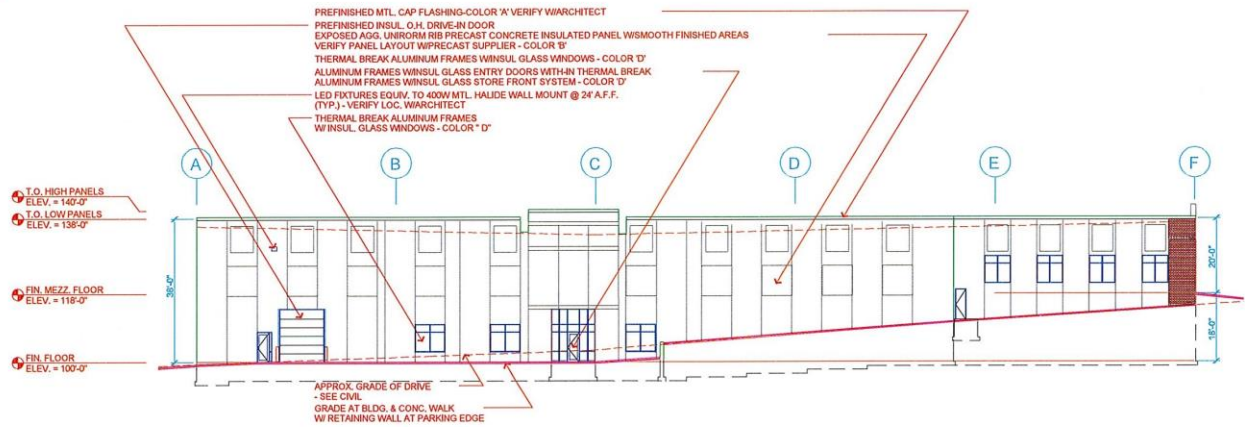
FAX 612 332 0241

BURNSVILLE INDUSTRIAL CENTER
 12100 Portland Avenue South, Burnsville, MN 55337

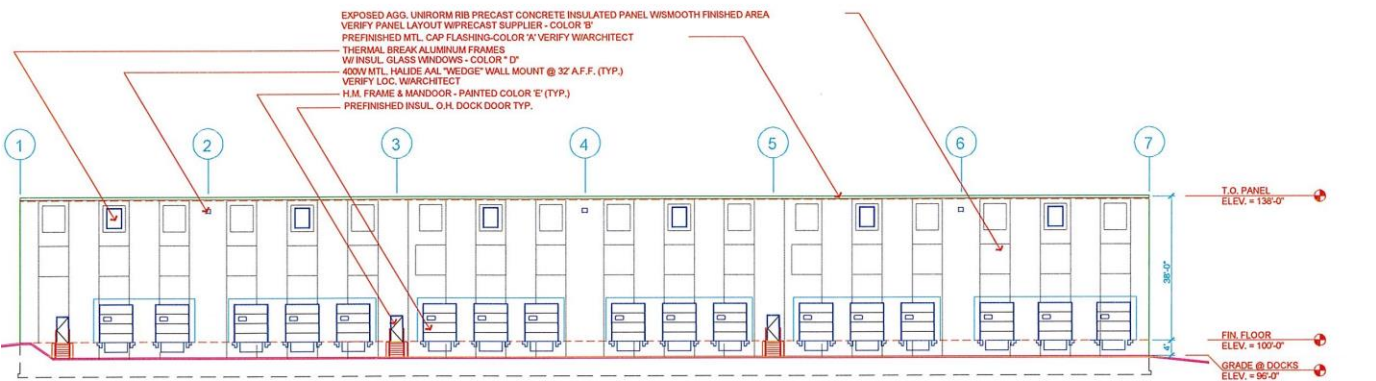
ELEVATION PLAN



1 EAST ELEVATION
 SCALE: 1/16" = 1'-0"



2 SOUTH ELEVATION
 SCALE: 1/16" = 1'-0"



3 WEST ELEVATION
 SCALE: 1/16" = 1'-0"

For more information, please call:
 John N. Allen
 (612) 332-1122 – direct
 (612) 845-3200 – cell

INDUSTRIAL EQUITIES L.L.P.
Development and Investments

TEL 612 332 0139

321 First Avenue North, Minneapolis, Minnesota 55401

FAX 612 332 0241

BURNSVILLE INDUSTRIAL CENTER

12100 Portland Avenue South, Burnsville, MN 55337

LOCATION MAP



For more information, please call:

John N. Allen

(612) 332-1122 – direct

(612) 845-3200 – cell